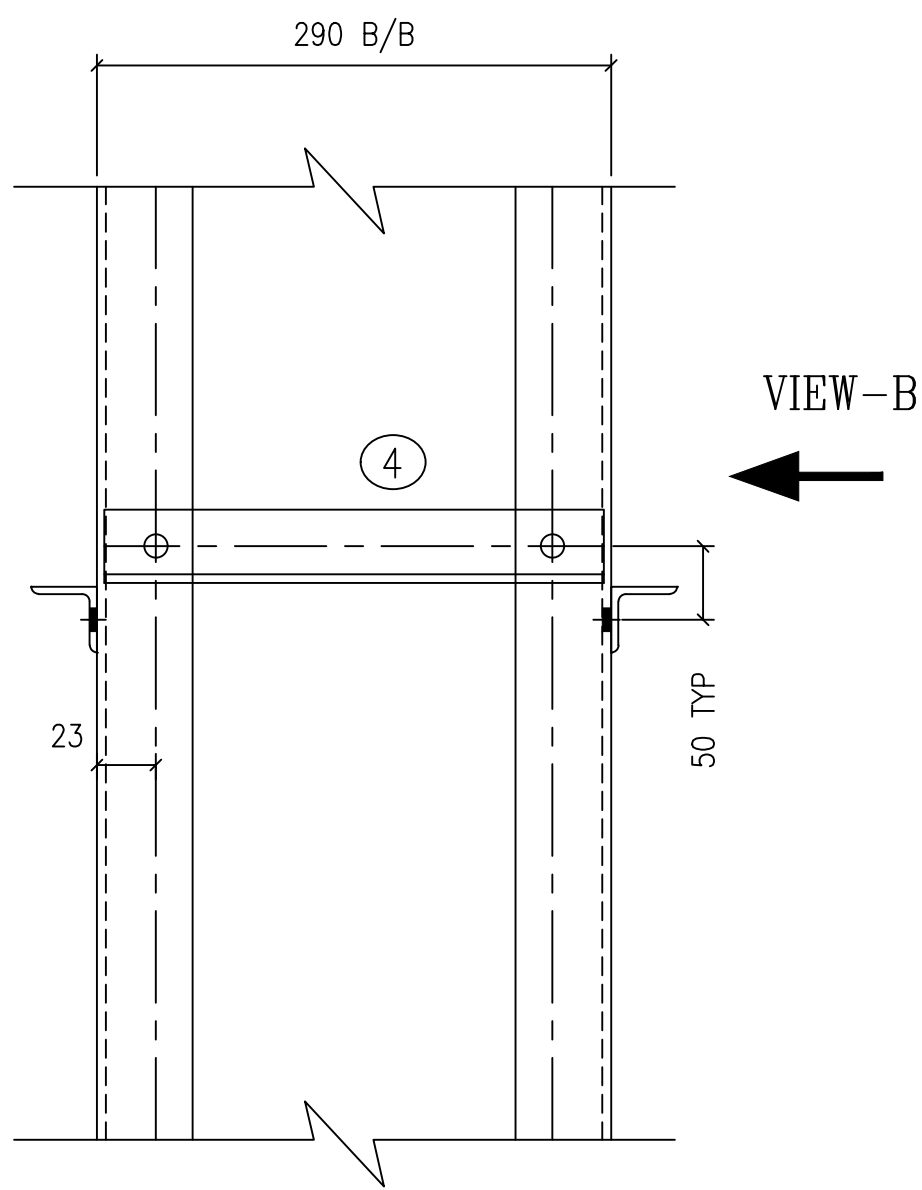
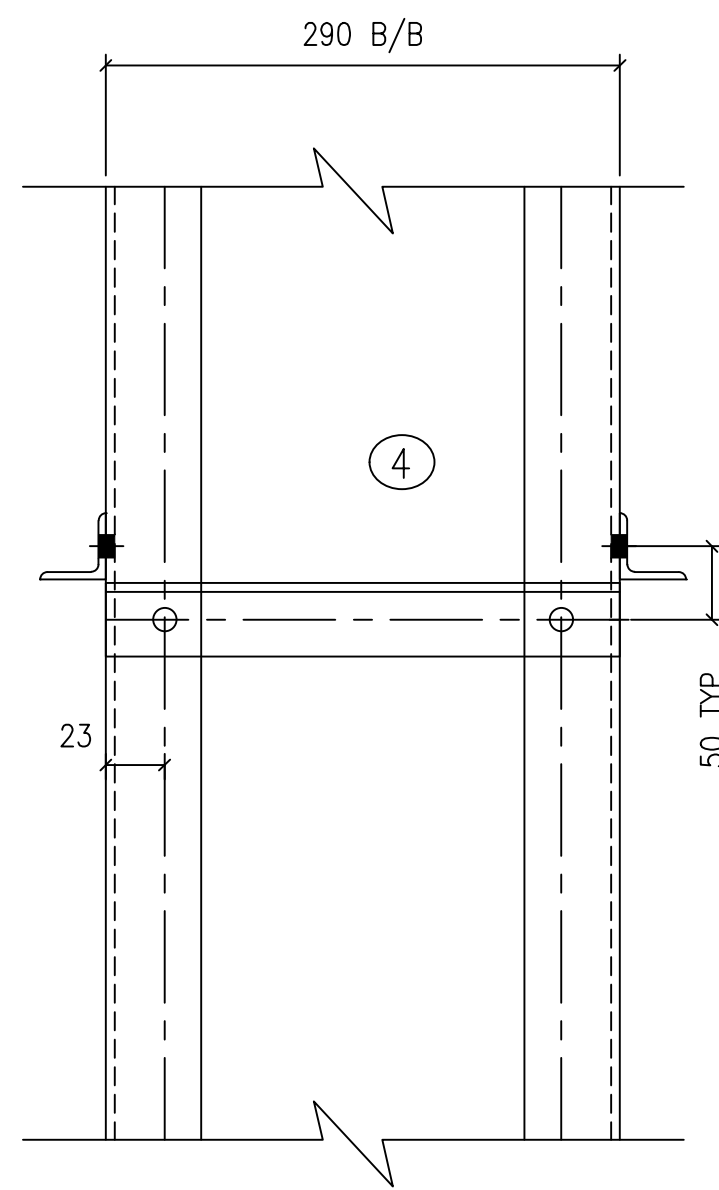


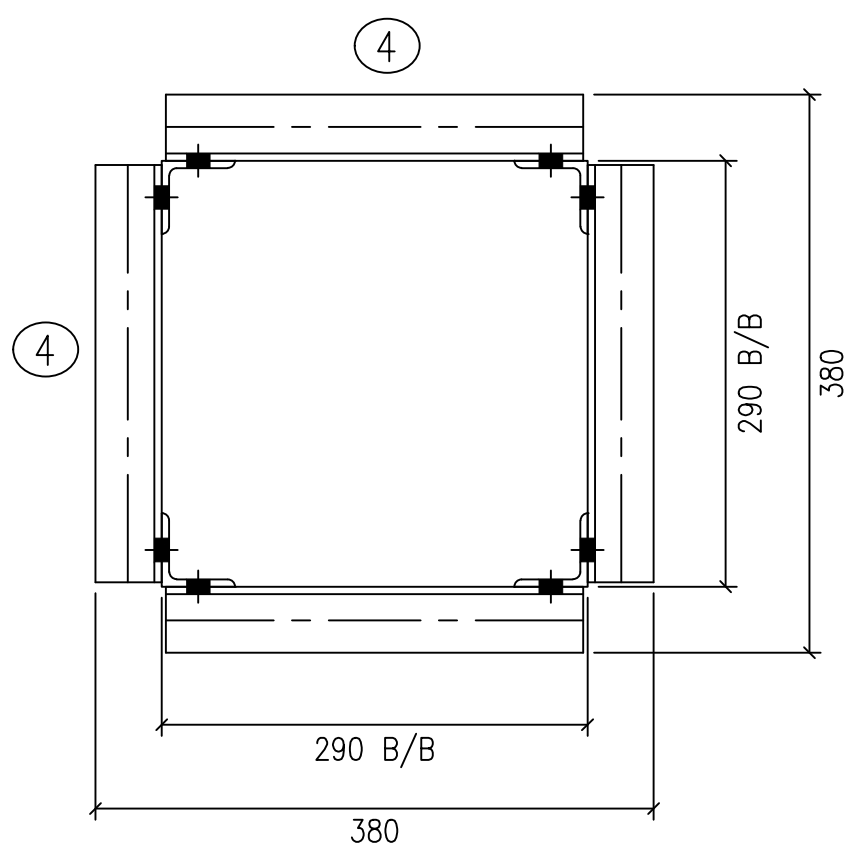
ELEVATION



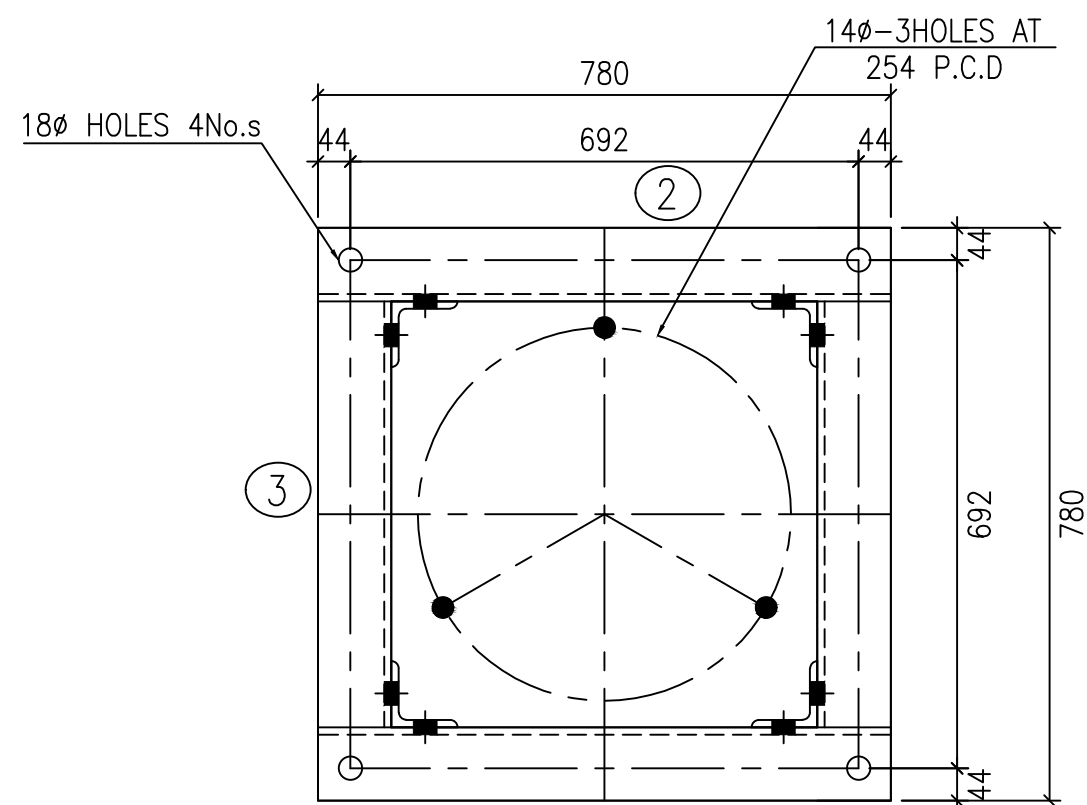
DETAIL AT-A



VIEW-B



DETAIL OF BASE



SECTION X-X

- NOTES:
1. ALL DIMENSIONS ARE IN MM.
  2. ALL HOLES ARE 17.5MM DIA. FOR 16MM DIA. BOLTS.
  3. ALL STEEL SECTIONS SHALL CONFIRM TO IS: 2062.
  4. ALL STEEL SECTIONS, BOLTS, NUTS & PACK WASHERS ARE TO BE HOT DIP GALVANIZED.
  5. ALL BOLTS SHALL CONFORM TO IS:12427(2001), WITH MECHANICAL PROPERTIES CLASS 5.6 AND NUTS SHALL CONFORM TO IS: 1367(PART-VI) OF PROPERTIES CLASS-5.
  7. DIMENSIONAL AND WEIGHT TOLERANCE  $\pm 10\%$ .
  8. THE HEIGHT OF STRUCTURE SHALL BE ADJUSTED TO MATCH WITH LIVE POINT HEIGHT (LPH) AS PER APPROVED SECTIONAL DRAWING.
  9. THE EQUIPMENT MOUNTING DETAILS SHALL BE MATCHED WITH APPROVED EQUIPMENT DRAWINGS.

BILL OF MATERIAL

ITEM NO.	SECTION DESCRIPTION	QTY	Unit Wt.	WEIGHT
LA-1	ISA-45X45X5-4071 mm	2	3.40	27.68
LA-1X	ISA-45X45X5-4071 mm	2	3.40	27.68
LA-2	ISA-50X50X6-390 mm	2	4.50	3.51
LA-3	ISA-50X50X6-290 mm	2	4.50	2.61
LA-4	ISA-45X45X5-290 mm	36	3.40	35.50
LA-5	PLT-390X390X6 mm	1	7.16	7.16
TOTAL WEIGHT IN KGS.				104.50

LIST OF BOLTS & NUTS

DESCRIPTION OF BOLT	QTY	Unit Wt.	Weight
M16 BOLT X35 mm LG	77	0.124	9.55
M12 BOLT X40 mm LG	3	0.132	0.396
3.5 TH.SP.WASHER FOR 160 BOLT	77	0.009	0.693
3.5 TH.SP.WASHER FOR 120 BOLT	3	0.009	0.027
TOTAL WEIGHT		10.66	

Approval Ltr No.: CEE/P&C/SET/EE(TL)/AEE-9/2021-22/10039-49 Dtd:05.10.2021

		KPTCL/P&C/TECH/66KV/LA				
			AEE	EE	SEE	CEE
REVNo	REVISION DETAILS	DRAWING NO.	DRAWN/CHECKED	SUBMITTED	RECEIVED	APPROVED

EQUIPMENT MOUNTING STRUCTURE FOR  
66KV LA  
(FOR 66/11KV SUBSTATIONS ONLY)

